

Product Datasheet

Product Name: Basic Rack PDU

SKU: AKB003032U

Product Code: K10ATJ4-24S0024A1791EES01-2QT

Overview

The Apislogik Basic rack PDU provides rack power distribution via a single input with multiple output receptacles and distributes power from low amperage single-phase circuits to higher-power 3-phase solutions. There are various types of input plugs, output receptacles, and protective devices available for mixing and matching. Installation methods, colors, and sizes can be chosen to meet your specific requirements.

Features

■ Input

Support for IEC60309, NEMA, UK, SCHUKO, HARTING, TEC etc.

■ Output

Support for C13, C19, C39, NEMA, UK, SCHUKO, IEC self-locking socket.

■ Hydraulic magnetic circuit breaker

Stable operation in environments with a temperature of 55°C/131°F. Provides respective protection for each branch of output. (Note: Not all models provide hydraulic magnetic circuit breakers)

■ Hot-swap LED indicator lights

Customers can replace hot-swap LED indicator lights without powering off the system. (Note: Not all models have hot-swap LED indicator lights)

■ Mounting method

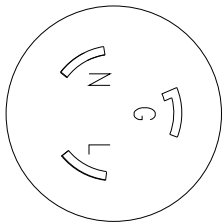
Toolless mounting peg and bracket mounting, two types of mounting options are available for selection.

Specifications

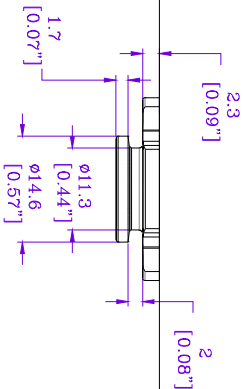
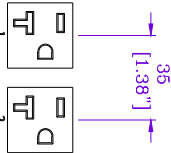
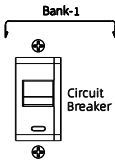
Input Parameters	
Input voltage	100-120 V AC;W+N+PE
Max current(phase)	30A
Rate current (phase)	24A
Input frequency	50/60Hz
Power Load	2.88KW
Input plug	NEMA L5-30P
Input wire	(3m) 3*10AWG
Output Parameters	
Output voltage	100-120 V AC
Rate current(phase)	24A
Output frequency	50/60Hz
Outlets	(24)NEMA 5-20R
Protective Device	
Circuit breaker	2*20A/1P
Hot-swap LED indicator lights	/
Physical Parameters	
Rack mount	0U
Shell color	Black
Shell material	Aluminum Alloy
Power input method	Top feed
Mounting location	dual-sided
Mounting mode	Peg
Dimensions(H*W*D)	1791mm*55.6mm*49mm
Net weight	9KG
Shipping dimensions(H*W*D)	2100mm*87mm*115mm
Environmental Parameters	
Operating elevation	0-3000m (0-10000 ft)
Operation Temperature	-10~60 °C
Humidity(operation/storage)	5-95%RH, non-condensing
Storage Temperature	-20~70 °C
Storage elevation	0-15000m (0-50000 ft)
Compliance	
Certification	UL、CUL

* Product Characteristics subject to change without prior notice.

* Disclaimer: This documentation is not intended as a substitute for and is not to be used for determining suitability or reliability of these products for specific user applications



(NEMA L5-30P PLUG-ENLARGED)

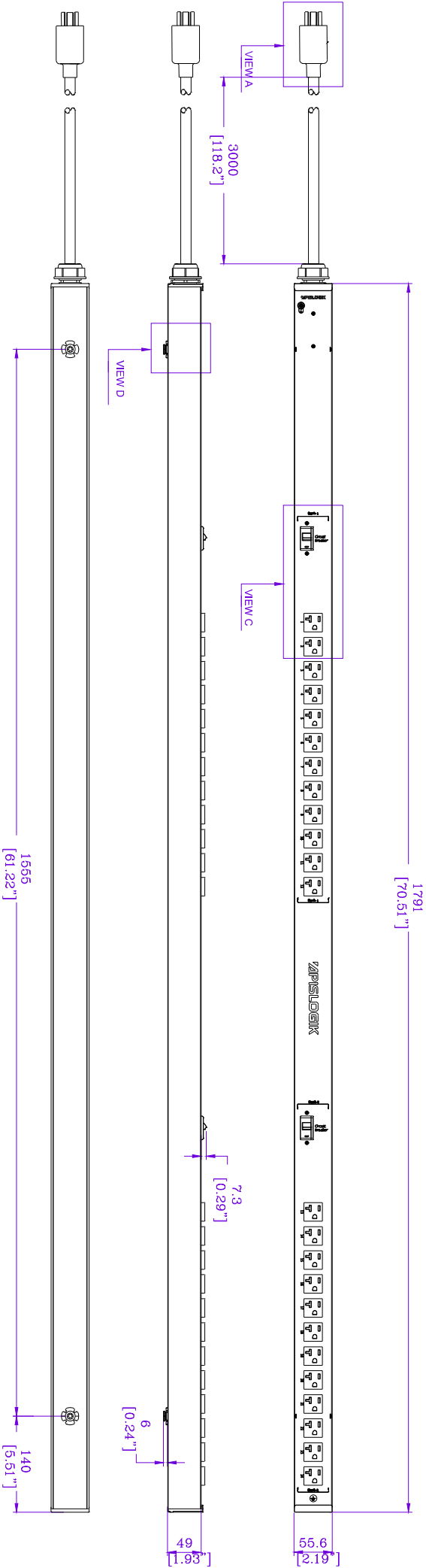


VIEW A

VIEW B

VIEW C

VIEW D



REV.	DESCRIPTION	DRAWN	CHECKEN	APP'D	DATE	NOTES: 1.INSTALLATION SHALL COMPLY WITH ALL APPLICABLE NATIONAL, STATE AND LOCAL CODES. 2.PLEASE REFER TO PRODUCT DOCUMENTATION FOR FURTHER INFORMATION. 3.UNLESS OTHERWISE SPECIFIED, ALL DIMENSIONS ARE IN MILLIMETERS (INCHES).			APISMOON PROPRIETARY AND CONFIDENTIAL INFORMATION		Product Name: Basic Rack PDU Input Cable: 3m 3" 10AWG Outlet: 24 NEMA 5-20R Circuit Breaker: 220A 1P Enclosure Material: Aluminum Alloy		Rack Unit: 0U Incoming Mode: Top Feed Mounting Location: Dual-Sided Enclosure Color: Black		INPUT: 100-120 V AC; V+N+PE; 50/60Hz; 24A OUTPUT: 100-120 V AC; 16A PER BANK; 24A TOTAL 5-20R; 16A PER OUTLET		DWG NO. H/M: J039230620301 MODEL AKB003032U		SKU	
E																				
D																				
C																				
B																				
A	First edition	Jun Xiong	LQ LI	YH Chen	6/20/2023															
REV.	DESCRIPTION	DRAWN	CHECKEN	APP'D	DATE															



DO NOT SCALE
DRAWING

SHEET 1 OF 2
REV. A

